

HIV Addiction Supportive Housing (ASH): Successes of a Housing First Model Within a Continuum of Care

*The North American Housing and HIV/AIDS Research Summit VIII:
Tackling the Social Drivers of HIV
September 15, 2015, Washington DC
Omni Shoreham Hotel*

*Kay Roesslein, Program Director, McEwan Housing and
Support/Loft Community Services
Michael Blair, Director of Residential Programs, Fife House
Foundation*



Addictions Supportive Housing (ASH)

Outcomes and evidence from the '(Positive) Service Coordination Project' and research study Positive Spaces, Healthy Places supported the funding proposal for a new **'Addictions Supportive Housing Program'**.

Partnership between Loft/McEwan and Fife House:
32 units of rent supplement housing
High level of case management support attached.

ASH Program is a housing first model

First units were secured in March 2011

August 2015, 57 unique clients have been housed

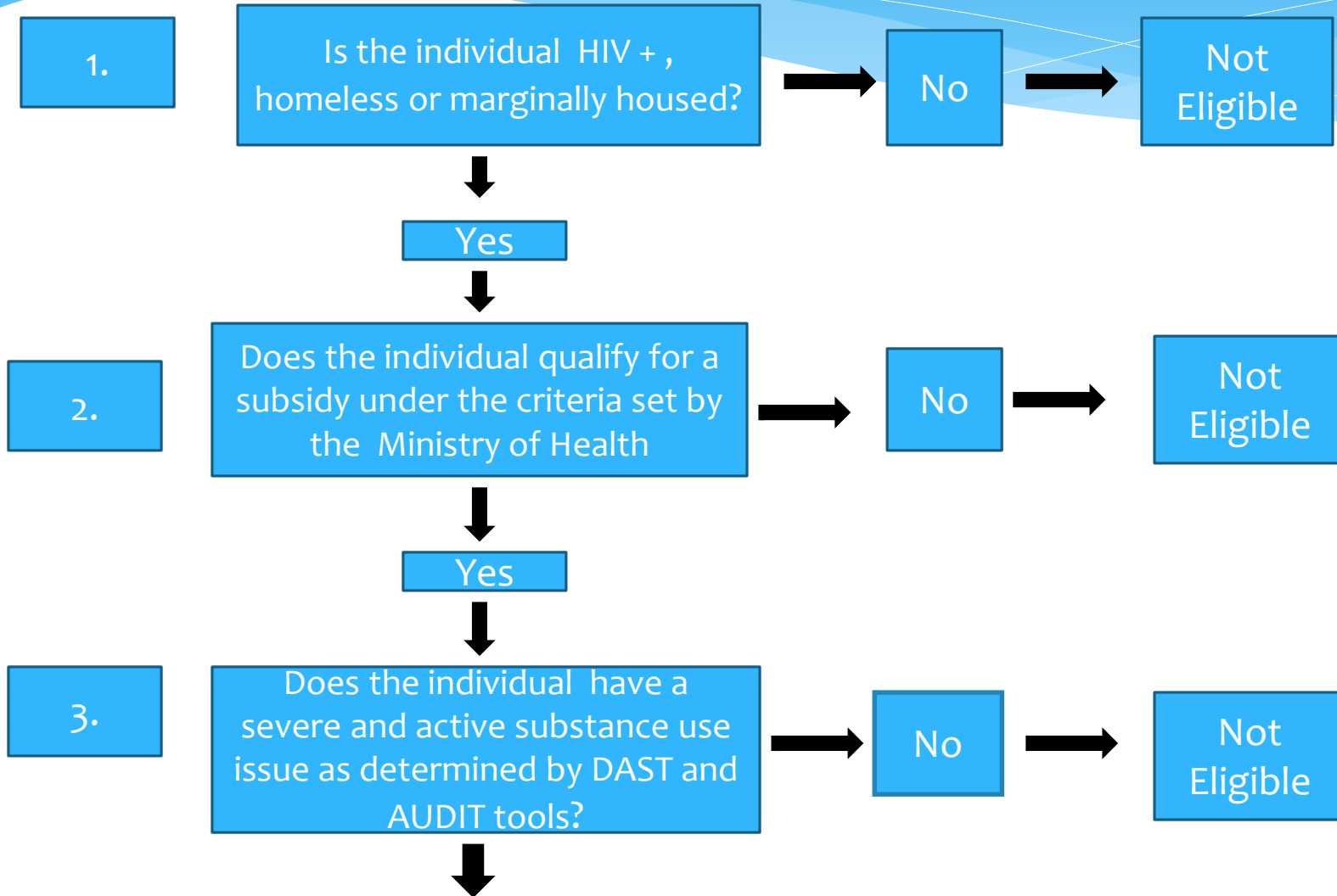


Key Components of Partnership and Housing First Support Model

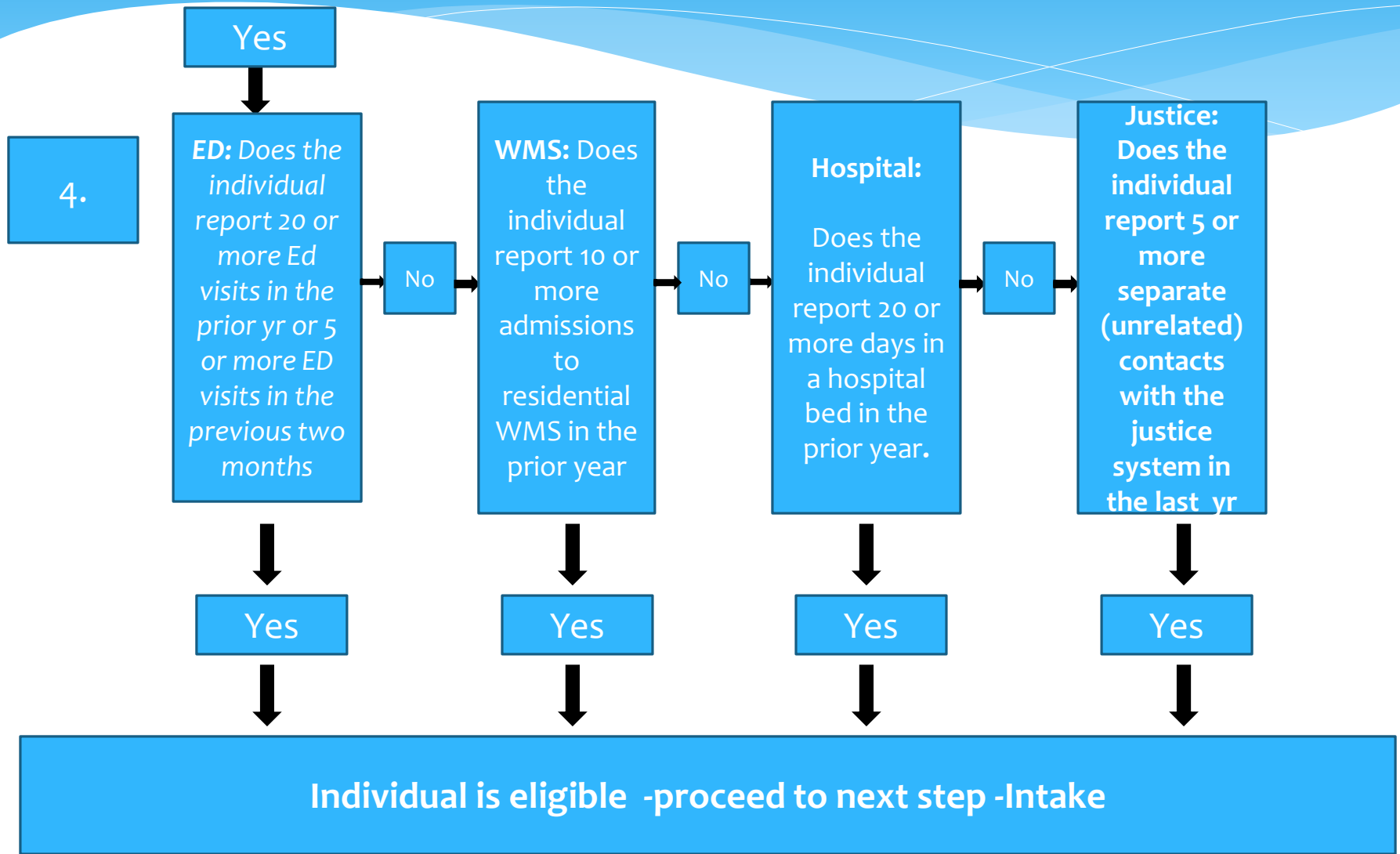
- * 8- 1 client to intensive case manager ratio
- * Streamlined intake and assessment
- * Access to health and stabilization services through Service Coordination Project
- * Integrated ASH team
- * Scattered site model
 - * no more than four units per building
- * Collaborative relationships with private and non-profit landlords
- * Tenant engagement in community programs
- * Peer advisory committees, peer volunteer, peer employment opportunities
- * Shared values, passionate leadership, and flexibility.



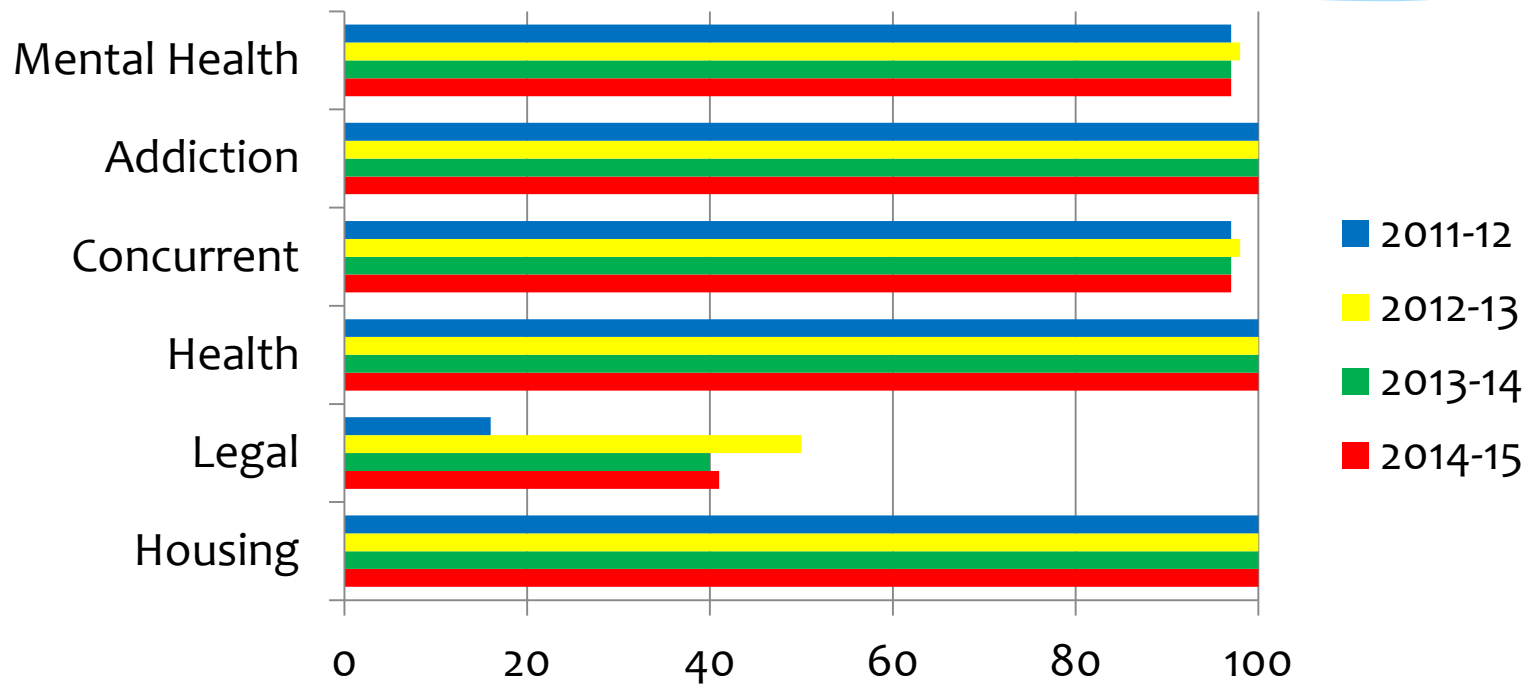
Decision-Tree for Addictions Supportive Housing Eligibility



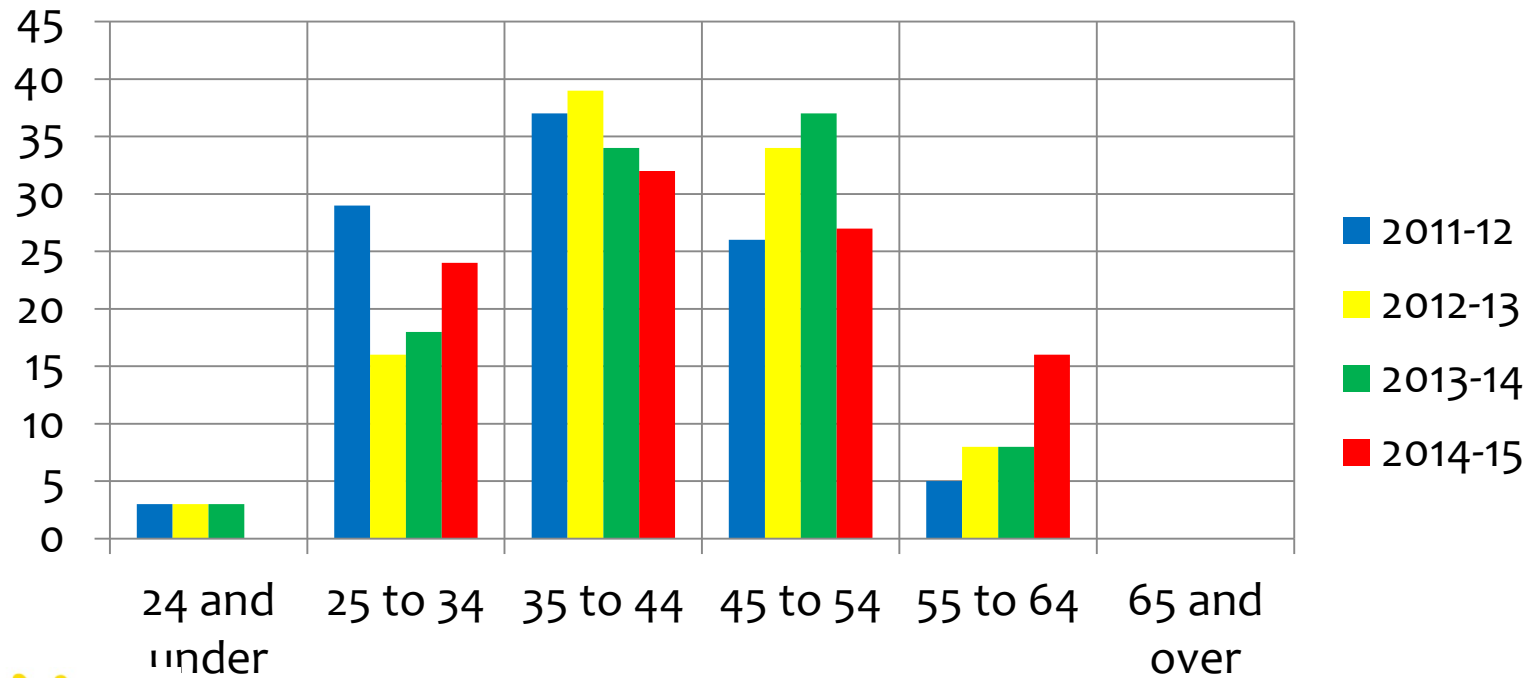
Decision-Tree for Addictions Supportive Housing Eligibility



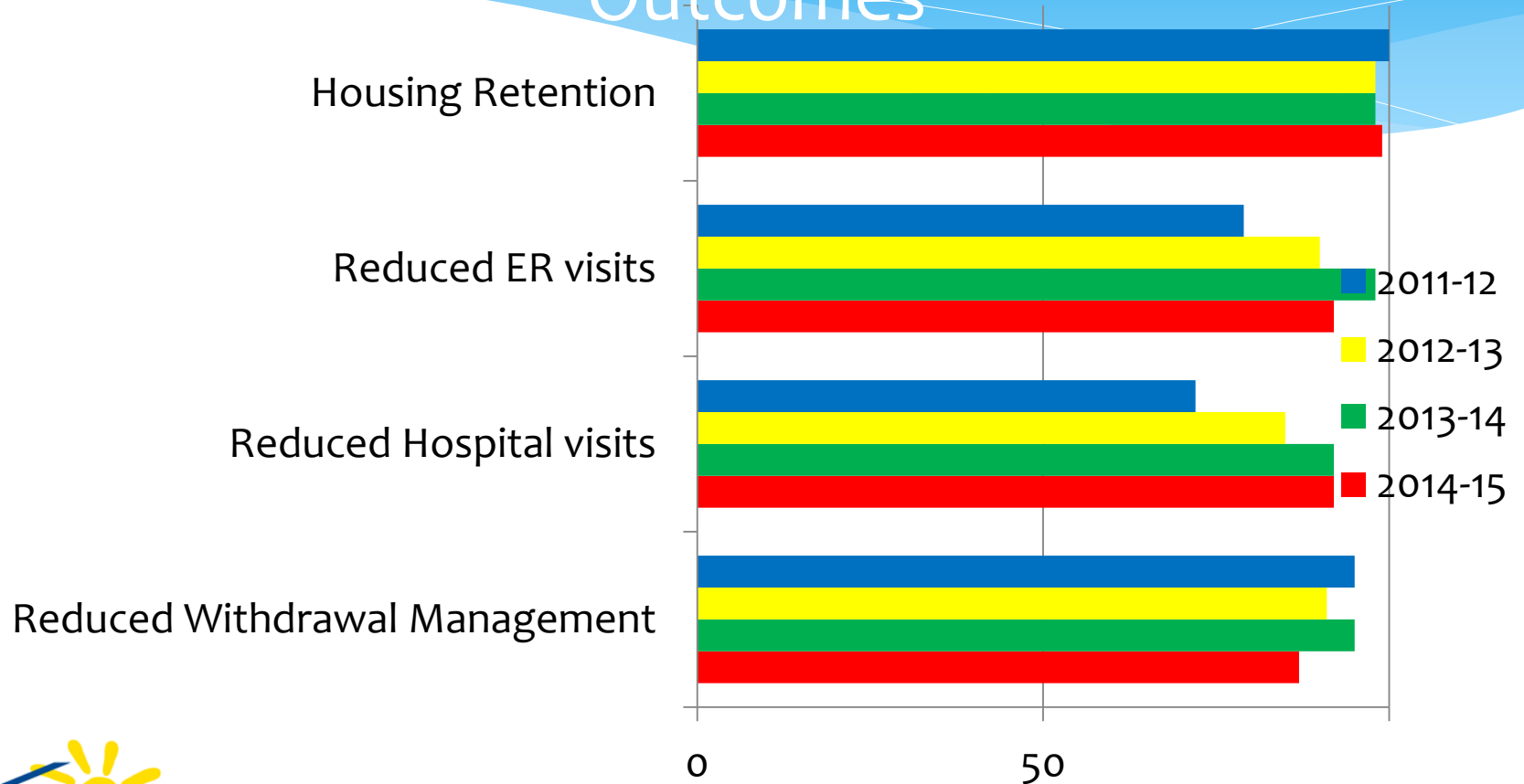
Addictions Supportive Housing Percentage of Clients per Category



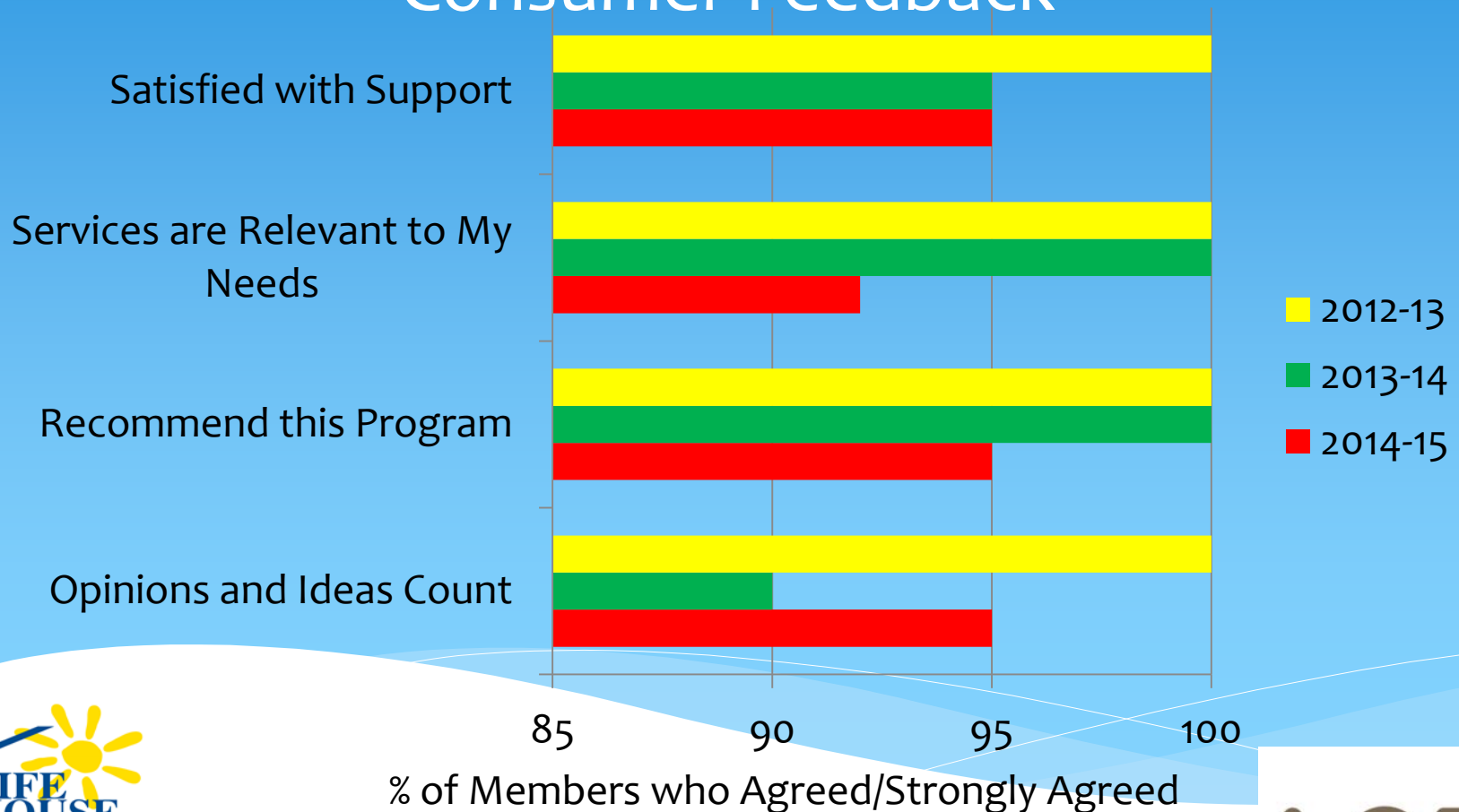
Addictions Supportive Housing Percentage of Clients per Age



Addictions Supportive Housing Outcomes



Addictions Supportive Housing Consumer Feedback



Challenges and Next Steps

- * Stigma – housing providers, other tenants
- * Level of some client disengagement from support and care services
- * Limited and reduced access to private sector units
 - * Over use of rent supplement programs
 - * Private sector pushback
 - * Vacancy rate private markets 1.6% (2014)
 - * 6- 10 year wait list for public and non-profit housing
- * Aging clients in ASH Program
 - * Experiencing other health co-morbidities
- * Rent subsidy in for single unit occupancy
 - * Coupling
- * Secured additional funding 8 rent supplements; additional case manager

Thank-you

*Kay Roesslein, Program Director, McEwan Housing and
Support Services/Loft Community Services*
kroesslein@loftcs.org

*Michael Blair, Director of Residential Programs, Fife
House Foundation*
mblair@fifehouse.org



**THE NORTH AMERICAN HOUSING
AND HIV/AIDS RESEARCH SUMMIT**

