

**Translating Research into New
Funding Opportunities: *Cashing
In on the Value of an AIDS
Housing Unit***

Summit – Sept. 15, 2015

Arturo V. Bendixen

AIDS
FOUNDATION
OF CHICAGO

 Center for Housing & Health

Mantra for the ACA



- 1) Increase access to care**
- 2) Increase quality and outcomes**
- 3) Decrease costs**

THE COST / VALUE OF A PSH/AIDS UNIT



The Average Cost of an AIDS Unit Chicago - 2015

\$15,000 annually

\$1,250 monthly



AIDS Unit with Value – Evidence-based Data

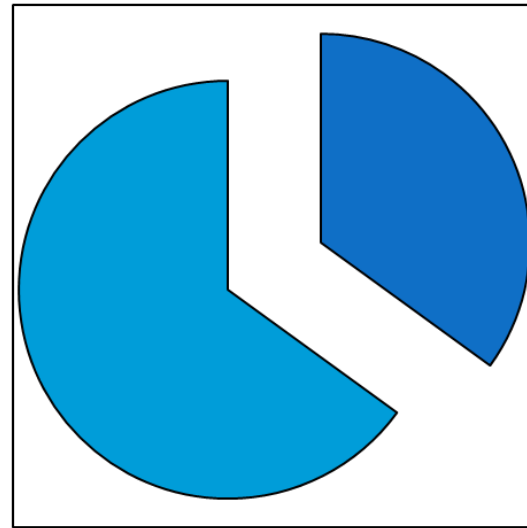
- **Increases access to quality health care**
- **Increases health outcomes**
- **Decreases health care costs**



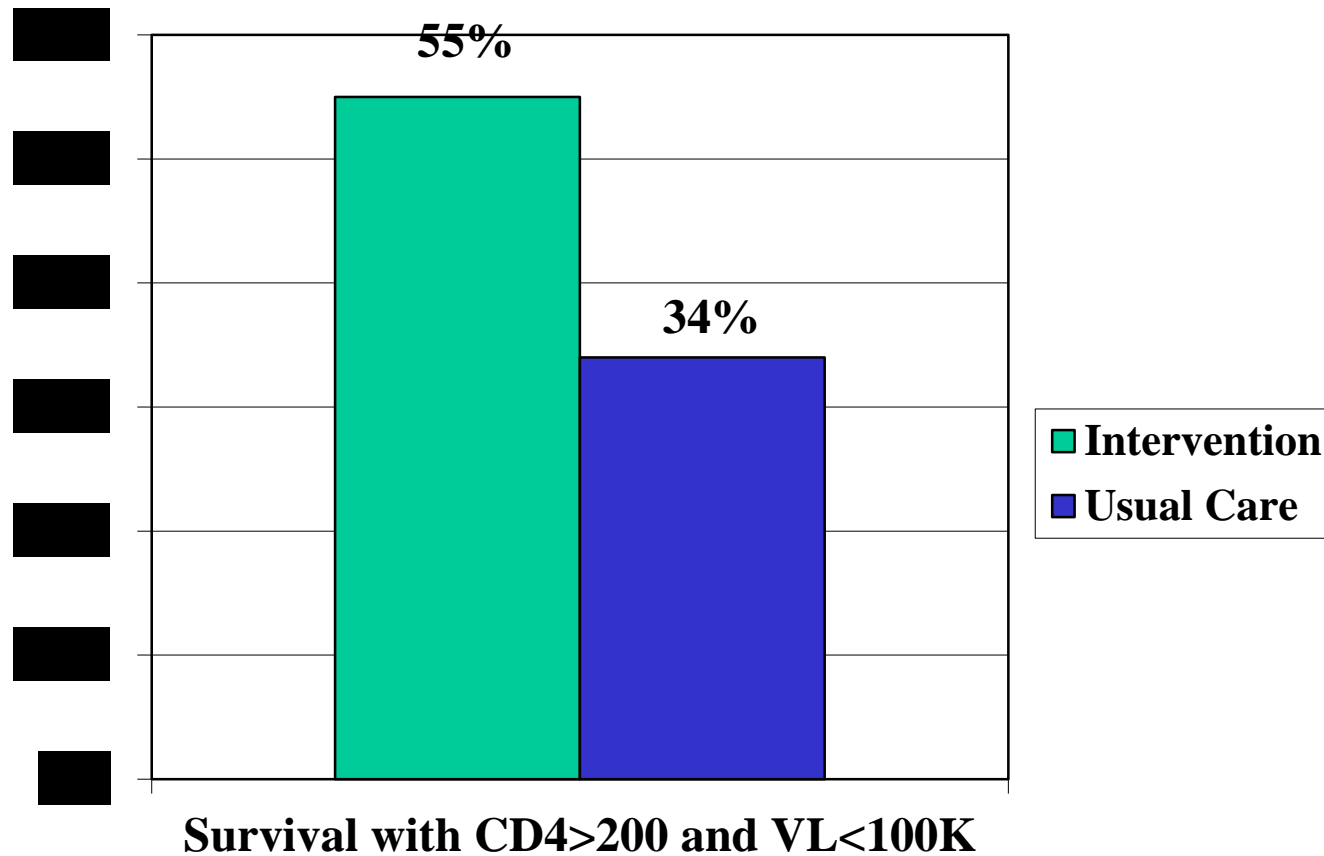
Hospital Days

Chicago CHHP Study

Intervention
Group: 2.7
fewer days than
the Usual Care
Group



Survival with Intact Immunity



HEALTH CARE SYSTEM PAPERS

- 1. Medicaid**
- 5. 2. County Health Care Systems**
- 3. Hospitals and ACOs**
- 4. Managed Care – Insurance Companies**

Hospital Utilization for 83 days

A Case Study - UIC Hospital

- **\$70K expense / \$20K payment**
- **55 ER Visits**
- **13 Inpatient Admissions**
 - 8 Psych
 - 5 Internal Medicine
- **44 Ambulance**
- **Procedures**
 - 18 ECG
 - 22 X-ray



Homeless: \$233,000

**Carlos after 9 months of
supportive housing: \$147,000**

- after 20 months: \$ 86,000

- after 32 months: \$ 69,000

Annual Average Medicaid Expense Per Resident

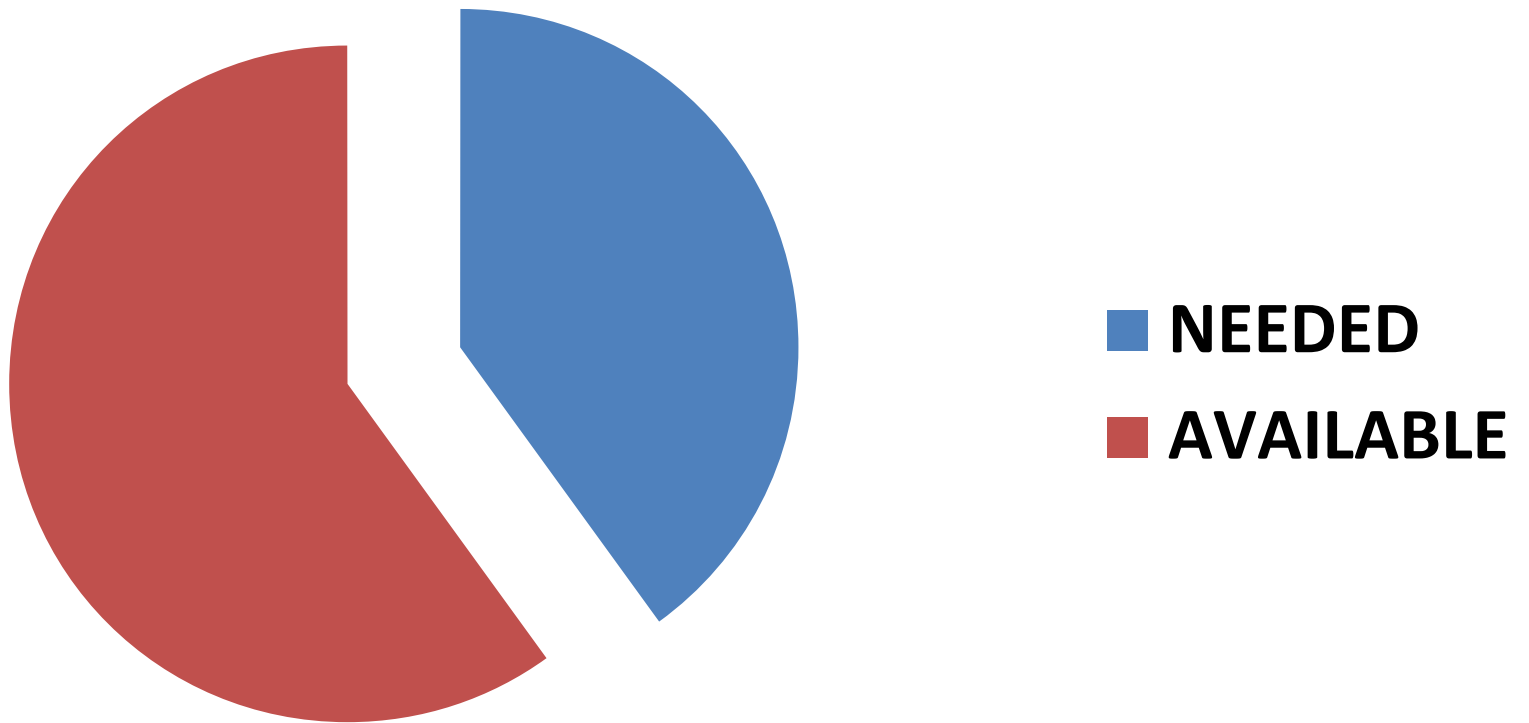
TOP THIRD DECILES OF EXPENDITURE



- Homeless: \$76,008
- 18 months of PSH: \$37,656

Average Savings: \$38,352

DEMAND > SUPPLY



How to Pay for Targeted AIDS Units

- Medicaid – NY
- County \$\$ – L.A.
- Boston model
- Role of managed care



L Medicaid in 2015

53% in Managed Care

- **Blue Cross / Blue Shield**
- **Aetna**
- **IlliniCare**
- **CountyCare**
- **Hospital ACOs**



“BETTER HEALTH THROUGH HOUSING”

A Chicago Area Supportive Housing Collaborative

- **Established in November 2014**
- **Partnering and negotiating with MCEs and hospitals**
- **Representing 29 supportive housing organizations**
- **A portfolio of approximately 70% of units in Chicago and Cook County**



BETTER HEALTH THROUGH HOUSING

BHH Collaborative - 2015

- **Negotiating with UIC Hospital and CountyCare to house 75+ high users**
- **Leading work to create thousands of new units**
- **Participating in NIH Research to optimize placement into housing**



H2 Action Plan – Chicago Area

- Integrate homeless with healthcare data
- Train line workers in both systems to coordinate care together
- Increase PSH by thousands

